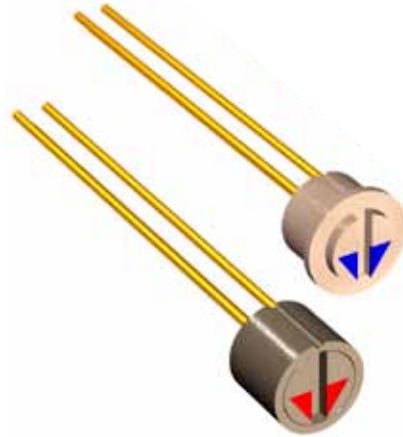


Trimmers Model PJ 62



Features

- Optional extended housing for increased robustness
- Seven position detent action trimmer
- Very small mechanical dimensions \varnothing 1.9 mm/[0.075"]
- With or without flange
- Optional color coding on rotor
- Accurate tapers. Linear, logarithmic and custom made
- Customer specified electrical resistance values and tolerances

Contents

1. History Revision.....	3
2. Mechanical Specifications.....	4
3. Electrical Specifications.....	5
4. Material Specifications.....	5
5. Environmental Conditions.....	6
6. Recommended Process Parameters.....	6
7. Mechanical Dimensions.....	7
8. Housing Styles.....	7
9. Rotor Style.....	8
10. Adaptor Ring.....	8
11. Seating Tool.....	8
12. Plastic Colors.....	9
13. Color Coding.....	9
14. Terminal Length.....	9
15. Resistance Values and Tapers.....	9
16. Product Specification Form.....	10

Sonion reserves the right to make changes at any time to improve reliability, function or design, in order to provide the best product possible.

1. History Revision

Revision Number/Date	Change from last revision
05 / Sep 03	History Revision added. Optional extended housing for increased robustness added. Materials Data changed: Solder terminals material changed to solid silver, gold flash plated. Metal parts changed to AgPd.
06 / Mar 06	Replaceable color marker added. New layout.
MT1034.A (07/08)	Minimum resistance value on linear tapers increased to 200 Ω .
007/JUL-17-2009	No technical updates
008/JUL-13-2011	Operational temperature and humidity removed. Storage humidity added.
009/JUN-19-2012	Replaceable color marker removed
010/2014-01-10	Updated design and new RoHS logo directive (2011/65/EU)
011/2014-02-28	Discontinue House 01, 02, 03

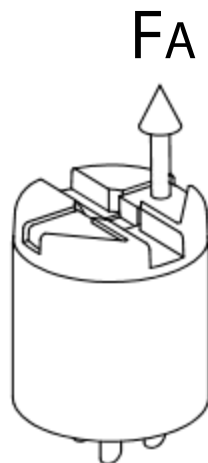
2. Mechanical Specifications

Rotational angle, mechanical	240° ±5°
Resistance curve angle	210°
Angle between rotor positions	40°
End stop torque	Min. 60 cNcm
Detent function torque	Max. 20 cNcm, typical 6-12 cNcm

Lifetime	
Resistance element	Min. 1,000 cycles
Detent function	Min. 25 cycles

Bending of terminals	Min. 0.5 mm [0.02"] from housing Min. 3 bendings 90°, with 0.25 N load
-----------------------------	---------------------------------------------------------------------------

Forces	
Torque to be applied repeatedly to mechanical stop	Max. 50 cNcm, max. 10 times
Force to be applied axially to knob	Min. 10 N, without electrical intermittence
Base retention force	Min. 4 N



3. Electrical Specifications

Resistance value	
Linear	200 Ω to 1M Ω
Logarithmic	500 Ω to 600 k Ω
Double logarithmic	2 k Ω to 500 k Ω
Resistance value tolerance	\pm 20% (-20% to +30% for values \leq 1 k Ω)
Resistance taper	See 'Tapers Data Sheet'
Wiper contact resistance	Typ. better than 20 dB rel. R
Max. load	1 mW

4. Material Specifications

All materials comply with RoHS directive (2011/65/EU)

Solder terminals	Ag, gold flash plated
Other metal parts	PdAg
Plastic parts	PA 6.6
Carbon track base	Reinforced glass epoxy
Resistance material	Carbon / Silver composite

Lubricant, glue / seal, and paint specifications are proprietary information.

5. Environmental Conditions

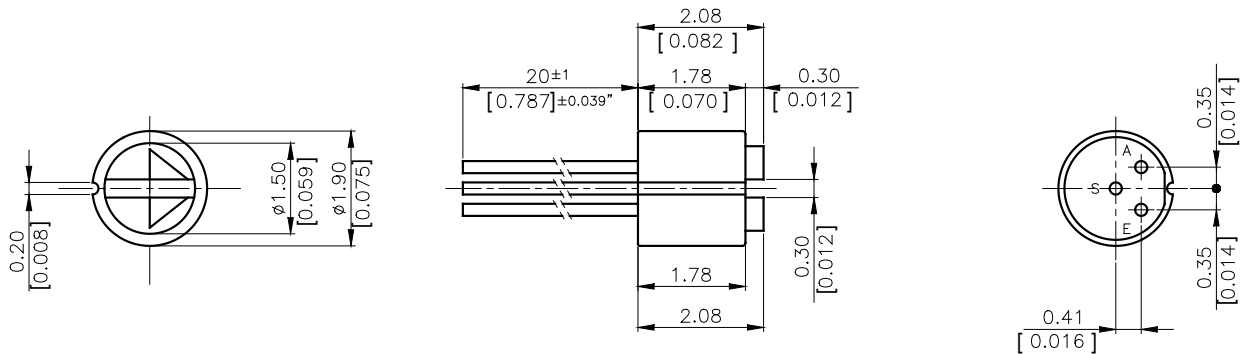
Storage temperature	-40 to + 60°C
Storage humidity	10 to 95% RH

6. Recommended Process Parameters

Gluing	
Types of glue	<p>Cyanoacrylates (non-blooming) , i.e. Loctite 401, 408, 460 and Sicomet 50, 63, 77</p> <p>Non-blooming types must be used to ensure that residuals from the curing process do not degrade the component.</p>
Soldering	
Soldering temperature and time	<p>300°C [572°F] for 3 s or 350°C [662°F] for 1 s</p> <p>To prevent damage to the carbon taper as a result of the soldering process, the rotor must be turned either fully CW or CCW during soldering</p>
Soldering distance	<p>Min. 0.3 mm [0.012"] from housing</p> <p>Exceeding temperature, time and distance recommendations may damage the component. Mechanical stress on soldering terminals must be avoided during soldering.</p>
Cleaning	
Cleaning solvents	<p>Aqua wash (Alpha 2110), Benzine</p> <p>Ultrasonic cleaning must be avoided as it may remove the lubricant inside the component</p>

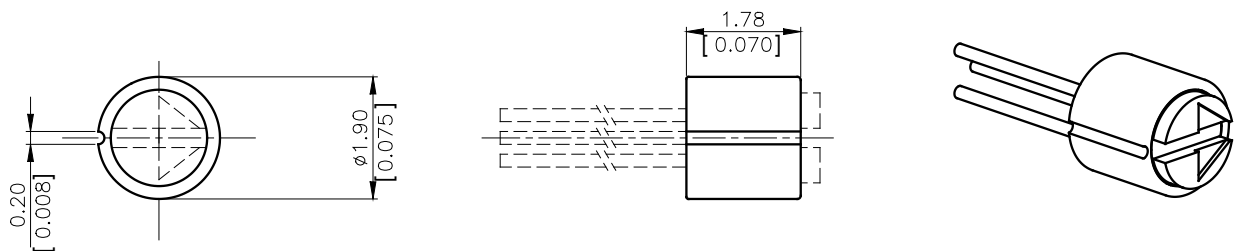
7. Mechanical Dimensions

Extended Housing Styles



8. Housing Styles

No. 12 Extended housing with thicker resistance element for increased robustness

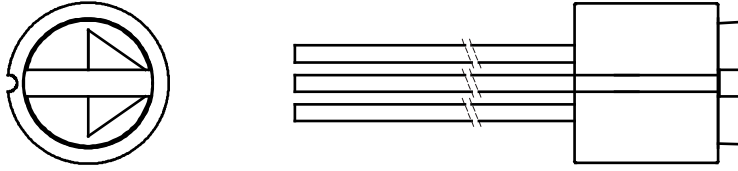


Note:

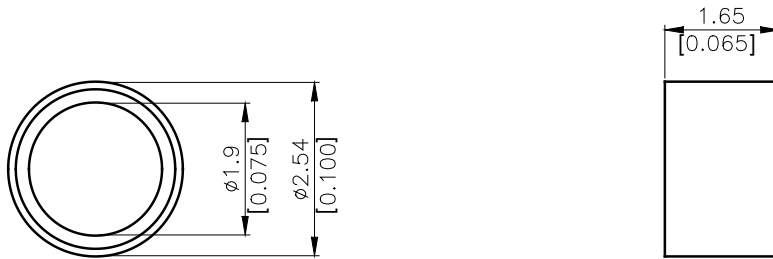
The standard measurement tolerance on the drawings is ± 0.05 mm/[0.002"]. Tolerances which differ from this value will be indicated on the drawings.

9. Rotor Style

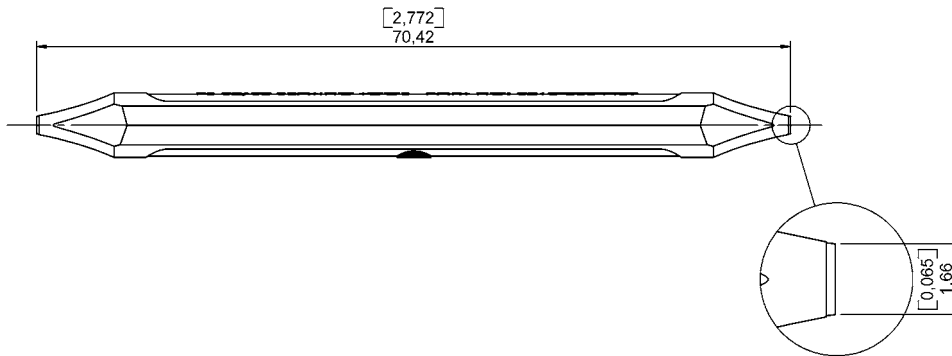
No. 01



10. Adaptor Ring



11. Seating Tool



Ordering Code No.: 6210-3004459

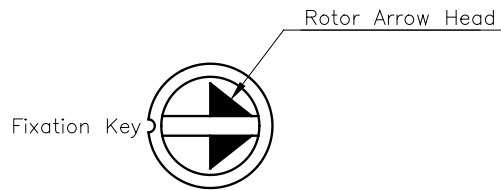
12. Plastic Colors

Please refer to the series 100 included in the Sonion 'Plastic Color Assortment' binder.

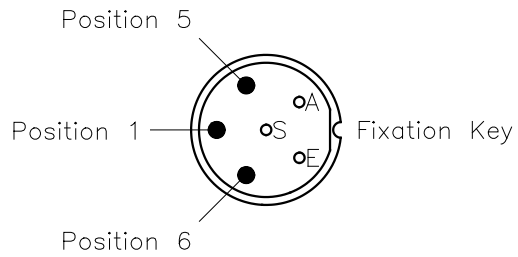
13. Color Coding

Please see colors for coding in the Sonion 'Plastic Color Assortment' binder or in the Product Overview.

Rotor Color Coding

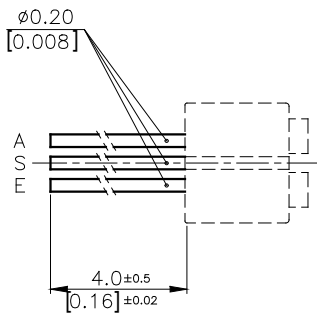


Bottom Color Coding

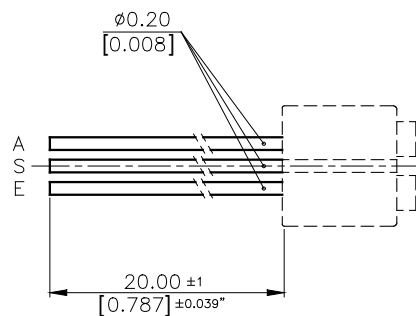


14. Terminal Length

4 mm.



20 mm.



15. Resistance Values and Tapers

Please see options under the paragraph 'Electrical Specifications' as well as the 'Tapers Data Sheet'

16. Product Specification Form

Name _____

Company _____

Customer Part No. _____

Parameters	Look at Page	Enter your choices	Guidelines
Model	2	PJ 62	
Housing Style	7		Please enter no. 12. Choose Housing Style 12 for improved robustness
Rotor Style	8	No. 01	
Adaptor Ring Style	8		
Plastic Colors	9		Please refer to the series 100 included in the Sonion 'Plastic Color Assortment' binder
Color Coding	9		Rotor Color Coding Please enter arrow head color Please see colors for coding included in the Sonion 'Plastic Color Assortment' binder
			Rotor Color Coding Please enter position and color Please see colors for coding included in the Sonion 'Plastic Color Assortment' binder
Terminal length	9		Please enter 4 mm: All housing styles 20 mm: Housing style no. 12
Resistance Value	9		Please see 'Electrical Specifications' and 'Tapers Data Sheet'
Resistance Taper	9		Please see 'Electrical Specifications' and 'Tapers Data Sheet'