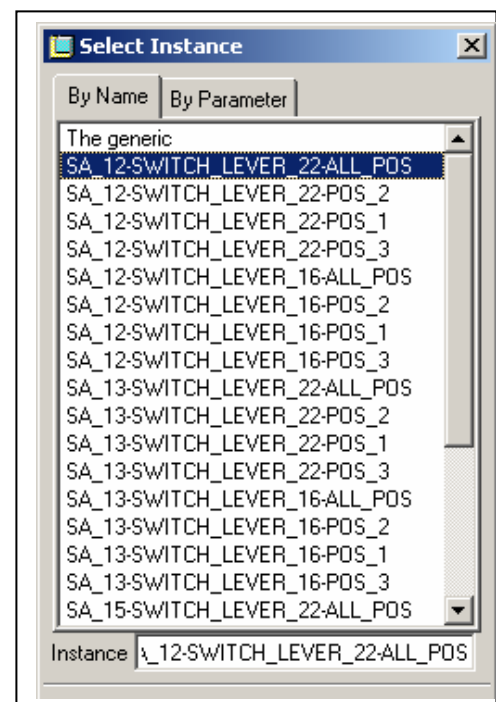
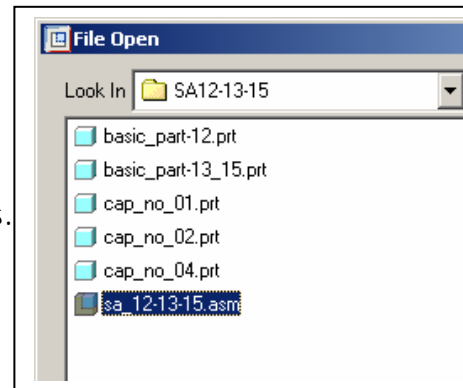


## README:

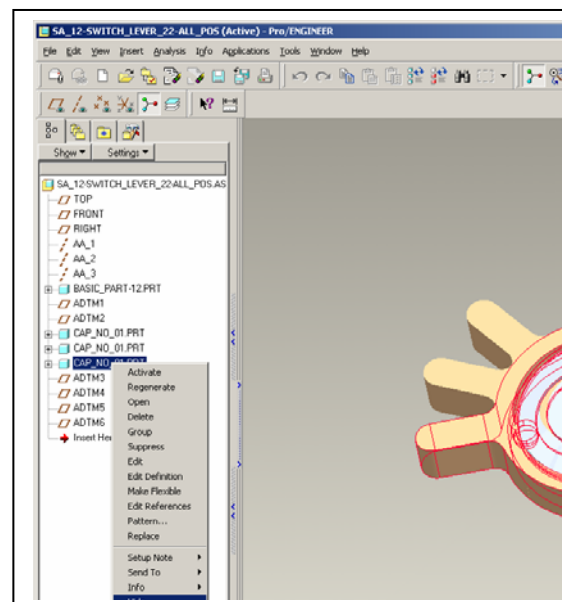
Specific for PJ 62 Color Marker:  
The Color Marker itself is available in series 100 colors. In this model, it is set to 'Grey'

The parts have been made, using family tables.

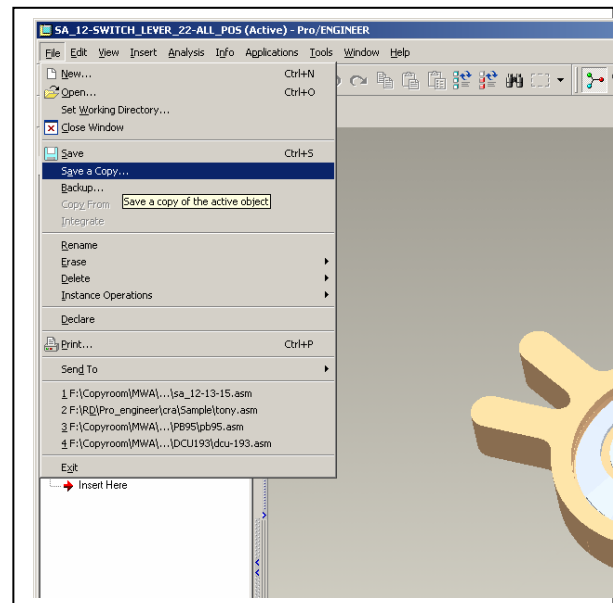
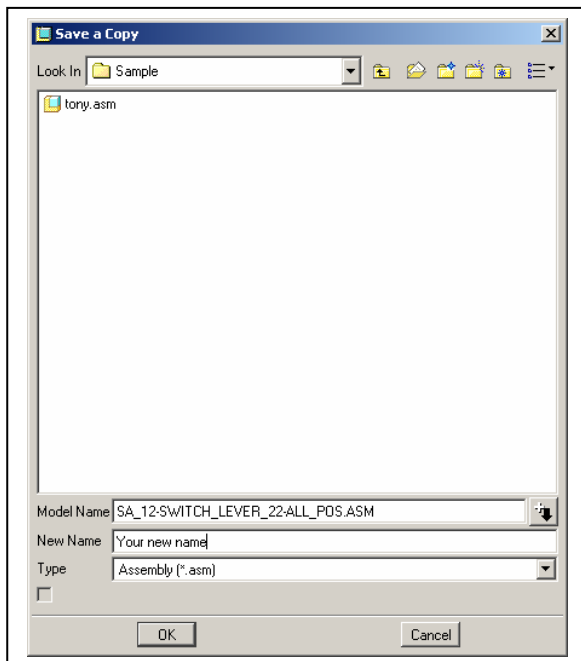
- Open the assembly (.ASM)
- Choose the combination that you want to work with from the table which is displayed. If there is only one configuration of knobs, caps, etc., no table is displayed.  
If you choose GENERIC, all combinations will show simultaneously.



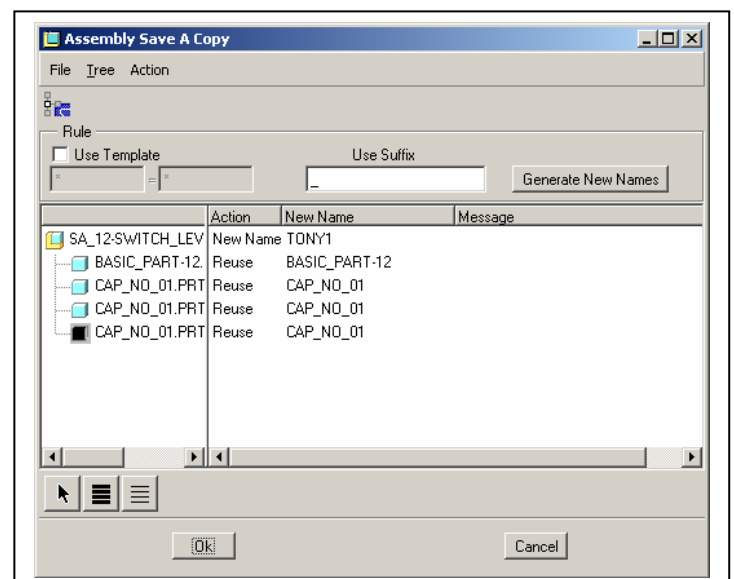
- You can now HIDE or DELETE the toggles, knobs, caps, or positions that you don't want to work with.



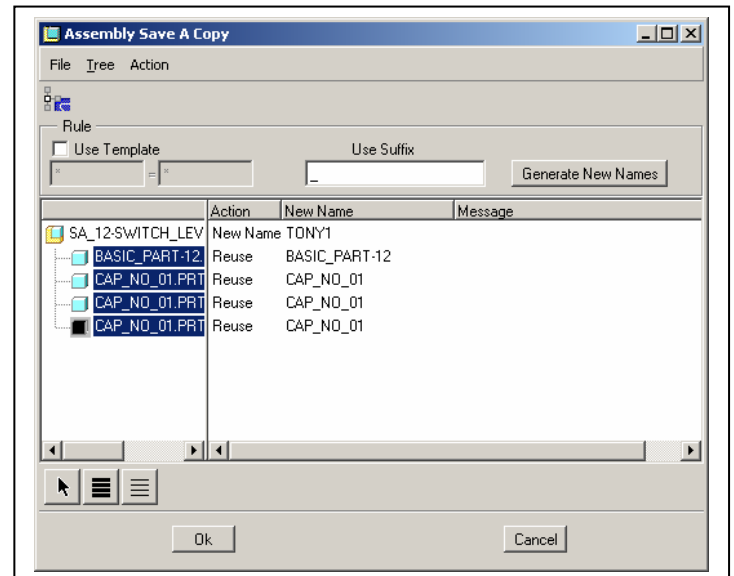
- Save the component using the *SAVE A COPY* command, in your folder with a new name or part number. Select OK.



- Choose the button with thick black lines in the window which is opened. This will select all parts belonging to this assembly.



- Next, choose GENERATE NEW NAMES in the same window.



- Select OK
- Insert the assembly with the new name in your design.
- Solder terminal lengths can be modified by opening the part with the terminals, find PROTRUSION and choose MODIFY.
- Again: HIDE or DELETE the toggles, knobs, caps, or positions that you do not want to show.