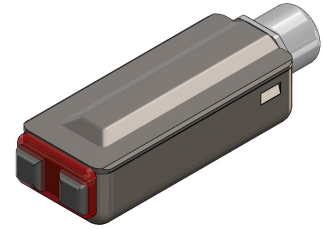


Description

Miniature magnetic receiver (Balanced Armature Type) for use in hearing instruments.

Features

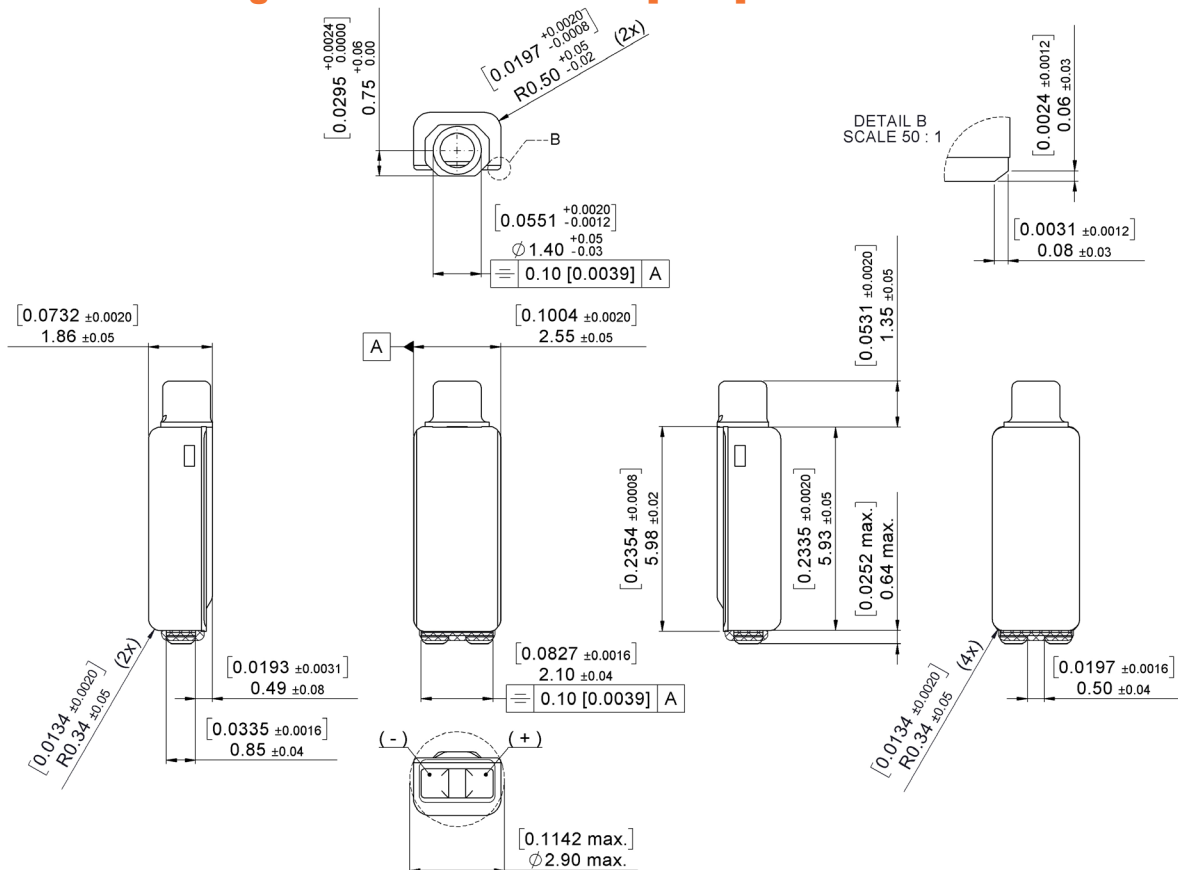
- Single receiver
- Slim and narrow for smaller cross section
- Low magnetic radiation



Mechanical data

| | |
|---------------------|--------------------------|
| Weight | 0.12 gr. |
| Case material | Ni80Fe15Mo5 |
| Solder pad material | Sn96.5Ag3.0Cu0.5 |
| Dimensions | Refer to outline drawing |

Product drawing - Dimensions in mm [inch]



Sonion reserves the right to make changes at any time to improve reliability, function or design, in order to provide the best product possible. Receivers series of this type can produce very high sound pressure levels. When such receivers are applied in hearing instruments or other communications equipment special attention should be paid to this capacity in order to prevent possible hearing damage.

Specifications

The acoustic termination consist of: 10x1 mm ID into a 2cc coupler. Drive is voltage drive of 0.13 V rms (0.35 mVA at 500 Hz) unless specified otherwise.

Environmental conditions: 23°C (73.4F), 50% RH.

| Parameters | | Min | Typ | Max | Unit | Comments |
|---------------------------------|------------|------|-------|-------|------|-------------|
| Sensitivity | @ 200 Hz | 94.5 | 97 | 99.5 | dB | |
| | @ 500 Hz | 94.5 | 97 | 99.5 | dB | |
| | @ 1000 Hz | 94 | 96.5 | 99 | dB | |
| Peak 1 | frequency | 2500 | 2700 | 2900 | Hz | |
| | output | 101 | 104 | 107 | dB | |
| Valley 1 | frequency | 3950 | 4550 | 5150 | Hz | |
| | output | 89.5 | 93 | | dB | |
| Peak 2 | frequency | 5000 | 5600 | 6200 | Hz | |
| | output | 93.5 | 97 | 100.5 | dB | |
| THD | @ 1/3 peak | | 1 | 5 | % | |
| | @ 1/2 peak | | 1 | 5 | % | |
| Maximum output @ peak frequency | | | 118.5 | | dB | @ 0.70 Vrms |

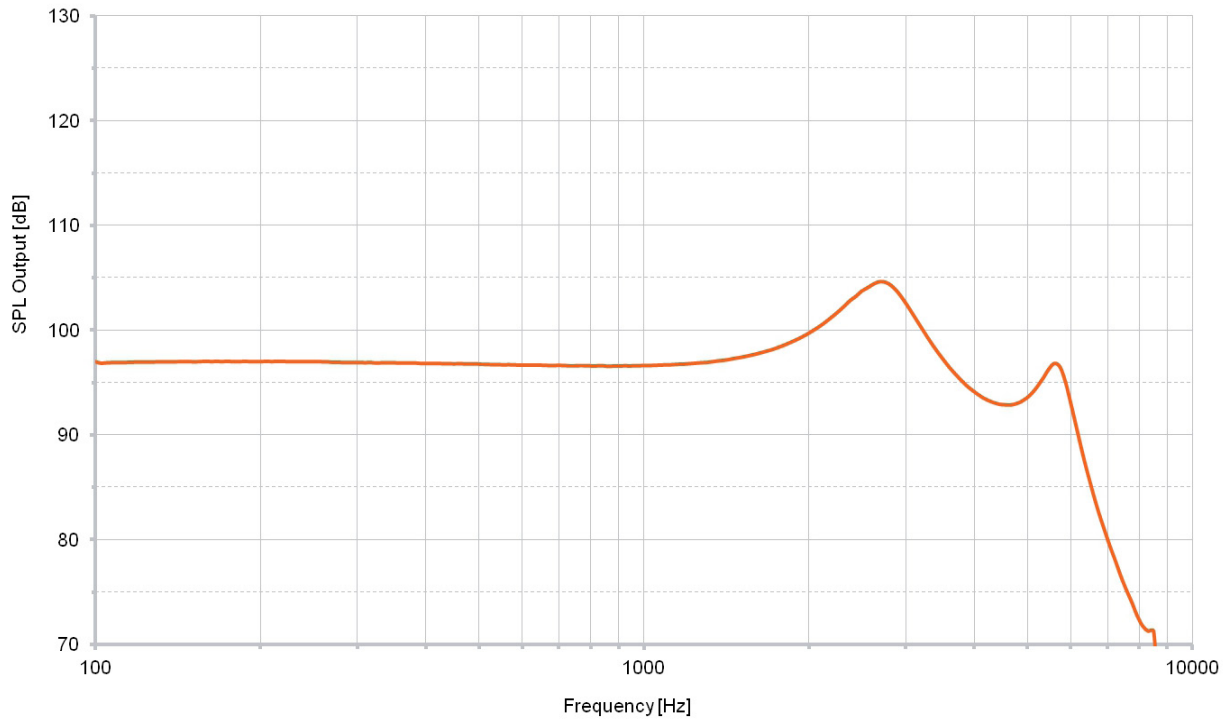
| Electric parameters | Min | Typ | Max | Unit | Comments |
|-----------------------|-----------|-----|-----|------|----------|
| Impedance @ 1000 Hz | 47 | 59 | 71 | Ohm | |
| Impedance @ 500 Hz | 40 | 50 | 60 | Ohm | |
| DC resistance @ 20°C | 38 | 45 | 52 | Ohm | |
| DC bias current range | zero bias | | | | |

| Additional parameters | Min | Typ | Max | Unit | Comments |
|---------------------------|-------|-----|-----|------|---|
| Shock resistance | 12000 | | | g | 90% survival rate with THD @ 1/2 peak frequency < 10% |
| Storage temperature range | -40 | | 63 | °C | |

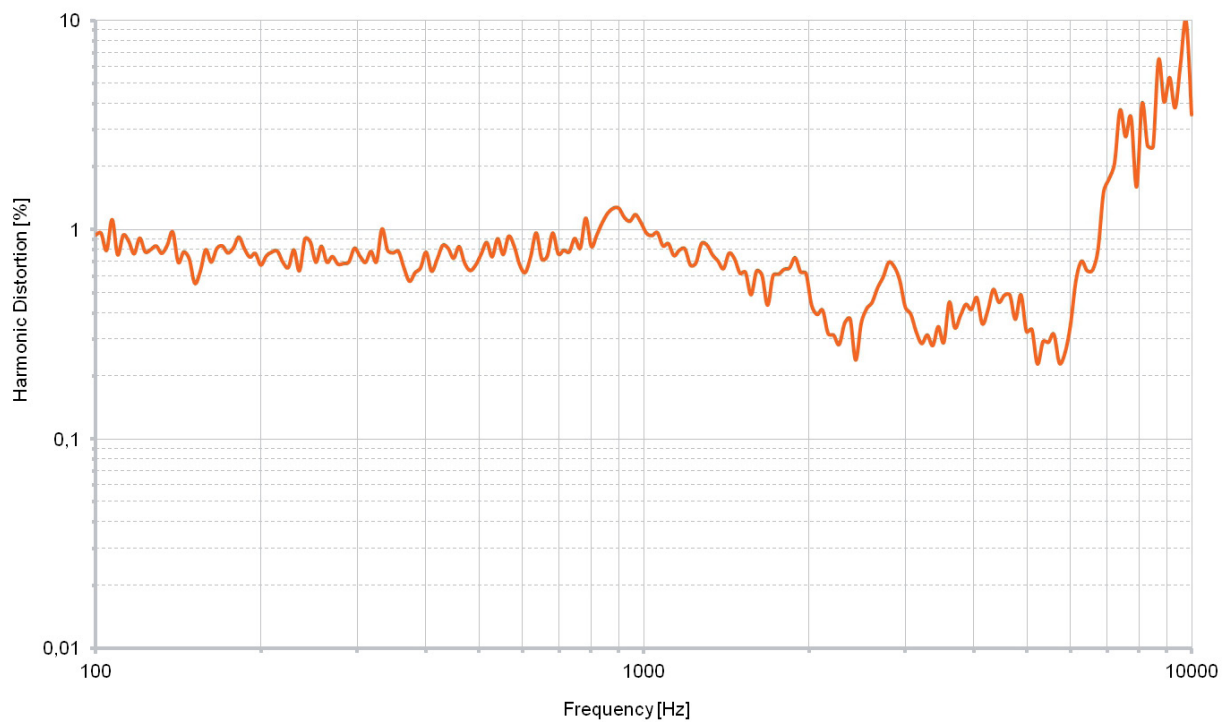
A positive voltage applied to the negative terminal (-) will result in an increase in pressure at the sound outlet.

Sonion reserves the right to make changes at any time to improve reliability, function or design, in order to provide the best product possible. Receivers series of this type can produce very high sound pressure levels. When such receivers are applied in hearing instruments or other communications equipment special attention should be paid to this capacity in order to prevent possible hearing damage.

Typical response curve



THD vs Frequency, typical, nominal input



Sonion reserves the right to make changes at any time to improve reliability, function or design, in order to provide the best product possible. Receivers series of this type can produce very high sound pressure levels. When such receivers are applied in hearing instruments or other communications equipment special attention should be paid to this capacity in order to prevent possible hearing damage.