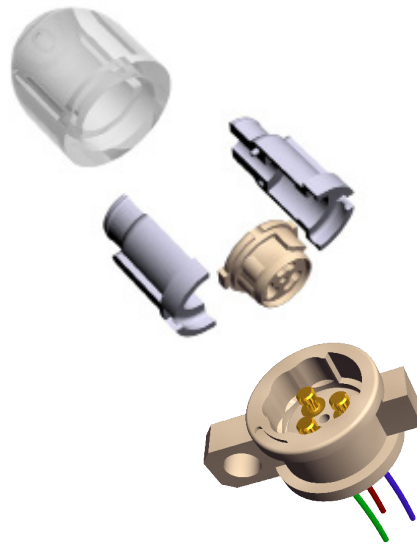


Connector Systems Model RIC Plug & Socket



Features

- For 'Receiver In the Canal' technology
- 3 terminal connection
- Socket for BTE mounting
- Plug mountable in customized plug cover
- Bayonet-mounting: 45°
- Good tactile feeling of mounting operation

Contents

| | |
|--|---|
| 1. History Revision..... | 3 |
| 2. Mechanical Specifications..... | 4 |
| 3. Electrical Specifications..... | 4 |
| 4. Material Specifications..... | 5 |
| 5. Environmental Conditions..... | 5 |
| 6. Recommended Process Parameters..... | 5 |
| 7. Mechanical Dimensions..... | 6 |
| 8. Product Specification Form..... | 9 |

Sonion reserves the right to make changes at any time to improve reliability, function or design, in order to provide the best product possible.

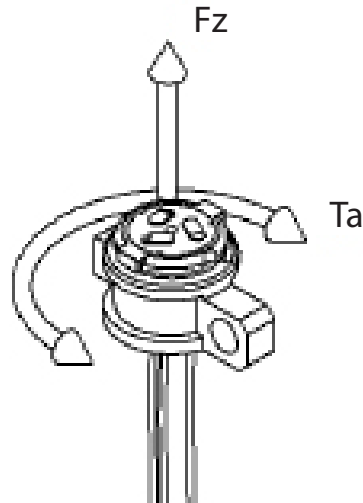
1. History Revision

| Revision Number/Date | Change from last revision |
|----------------------|--|
| 001/2007-10-05 | 1st revision |
| 002/2008-06-22 | No technical updates |
| 003/2009-07-31 | Force changed to torque in Mechanical Specifications |
| 004/2015-10-05 | Updated design |
| 005/2019-07-16 | Change of storage temperature and humidity (CR3860) |

2. Mechanical Specifications

| | |
|--|--|
| Rotational angle | 45° ±4° |
| End stop torque, Ta | Min. 4.0 Ncm. Also depending on design of inner plug cover |
| Rotational torque for mounting/dismounting, Ta | 1.5 Ncm ± 0.6 Ncm |
| Socket terminal retention force | Min. 7 N per terminal |
| Disconnection retention force when locked, Fz | Min. 10 N |
| Connection and disconnection of plug | Min. 100 cycles |
| Connection and disconnection of socket | Min. 100 cycles |
| Plug cover retention force | Dependent on customer design |

Illustration of definition of rotational torque and retention force:



3. Electrical Specifications

| | |
|--|-------------|
| Contact resistance between plug and socket | Max. 500 mΩ |
| Insulation resistance between terminals | Min. 10 kΩ |

4. Material Specifications

All materials comply with RoHS directive (2011/65/EU)

| | |
|---------------------|------------------------------------|
| Tube Lock | PA 6.6 glass reinforced |
| Contact module | LCP and PEEK |
| Metal parts | AgPd |
| Sockets | LCP |
| Socket contact pins | Stainless steel, gold plated |
| Socket terminals | Insulated, solid flexible terminal |

Lubricant, glue/seal and paint are proprietary information

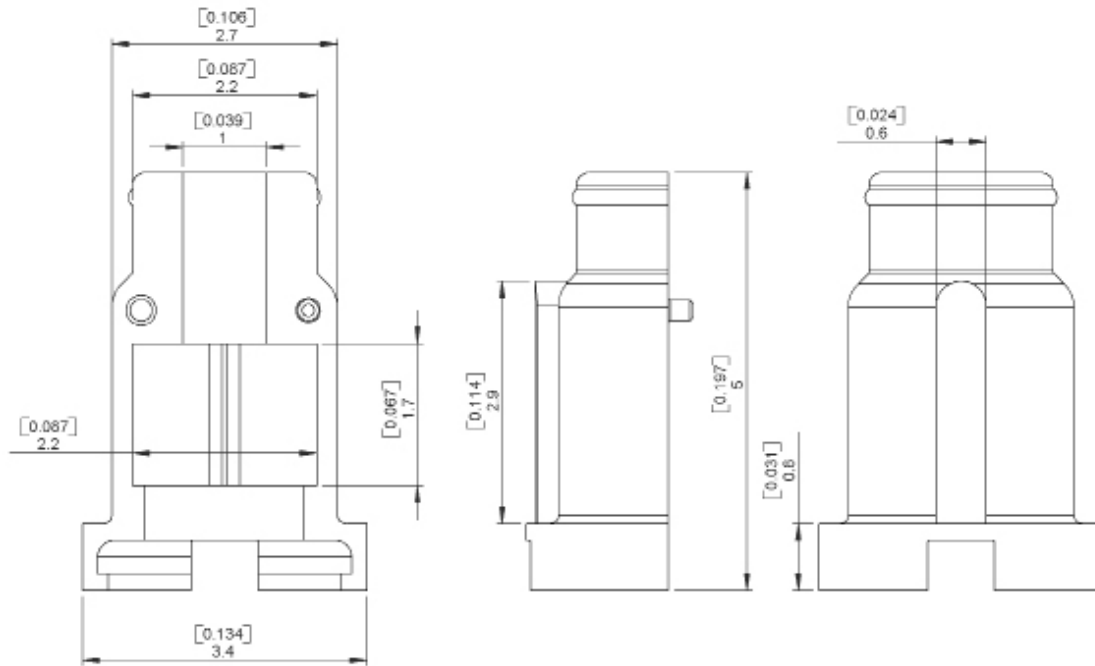
5. Environmental Conditions

| | |
|---|--------|
| Storage temperature | 25°C |
| Storage humidity | 60% RH |
| Purpose is to protect from high humidity and keep at driest condition as much as possible | |

6. Recommended Processing Conditions

| | |
|--------------------------------|--|
| Mounting of socket | |
| Mounting screw | ∅ 1.0 mm |
| Soldering | |
| Soldering temperature and time | Max. 300°C [572°F] for 3 s or 350°C [662°F] for 1 s |
| Soldering distance | Min. 0.2 mm [0.012"] from socket Exceeding temperature, time and distance recommendations may damage the component. Mechanical stress on |
| Cleaning | |
| Cleaning solv | Aqua wash (Alpha 2110), Benzine Ultrasonic cleaning must be avoided as it may remove the lubricant inside the component |

Tube Lock



The tube lock are 2 parts, which hold the plug and RIC tube in place. They are kept together by a plug cover, which Sonion can customize to match specific BTE geometry

Example of possible Plug Cover

