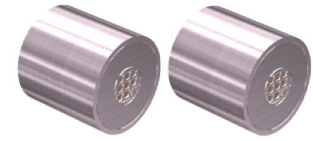


## Description

The matched pair 8002 microphone consists of two omni-directional microphones, both with individual specifications as noted in datasheet 8002 and matched so that the deviation in sensitivity between both microphones at the frequencies indicated below does not exceed the tabulated values.



## Matching

Drift issues arising during use or further processing will not be the responsibility of the supplier.

## Measuring conditions and criteria

Matching at 0.93 Volt supply, loaded with 26 kOhm//1 $\mu$ F impedance.

Environment conditions:

- Temperature 23°C (73.4F)  $\pm$  5°C (64.4F-82.4F)
- Relative humidity >80%

Frequency (Hz)	Sensitivity max .dev. (dB)	Phase max. dev. (°)
250-1000	0.5	2
1000-6000	1	5

## Matching at severe environmental conditions and criteria

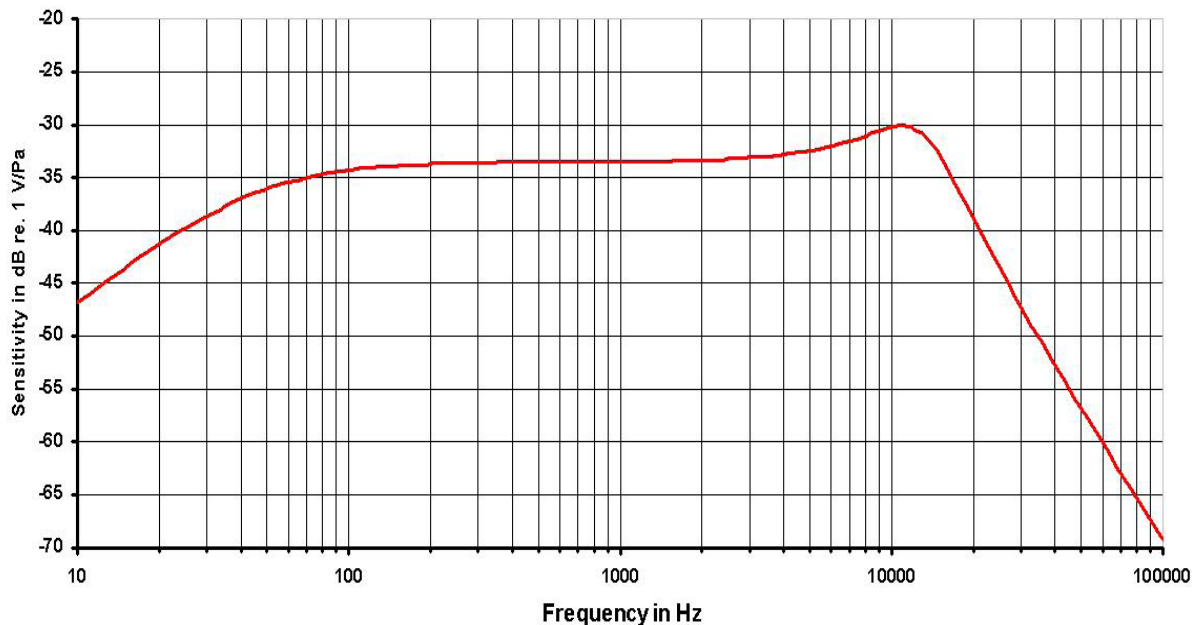
Matching at 0.93 Volt supply, loaded with 26 kOhm//1 $\mu$ F impedance.

Environment conditions:

- Temperature 23°C (73.4F)  $\pm$  5°C (64.4F-82.4F)
- Relative humidity >80%

Frequency (Hz)	Sensitivity max .dev. (dB)	Phase max. dev. (°)
250-1000	1.5	8
1000-6000	1.5	8

## Typical response curve



Sonion reserves the right to make changes at any time to improve reliability, function or design, in order to provide the best product possible.