

Description

Miniature magnetic receiver (balanced armature type) for use in hearing instruments and advanced audio applications.



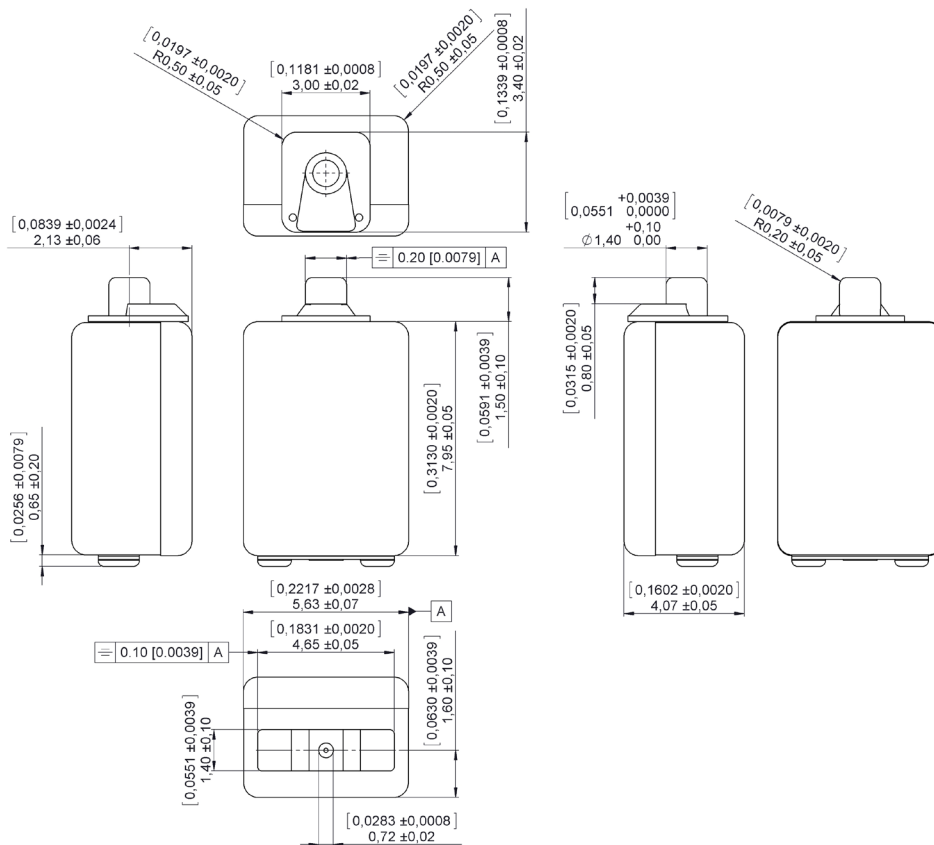
Features

- Extended bass by tuned back vent
- Ideal for use as single receiver IEM applications

Mechanical data

Weight	0.69 gr.
Case material	Ni80Fe20
Solder pad material	Sn96.5Ag3.0Cu0.5
Dimensions	Refer to outline drawing

Product drawing - Dimensions in mm [inch]



Sonion reserves the right to make changes at any time to improve reliability, function or design, in order to provide the best product possible. Receivers series of this type can produce very high sound pressure levels. When such receivers are applied in hearing instruments or other communications equipment special attention should be paid to this capacity in order to prevent possible hearing damage.

Specifications

The acoustic termination consist of: 4.5 x 1.4 mm ID + 11 x 1.9 mm ID into IEC 711 coupler.

Drive is voltage drive of 0.100 V RMS unless specified otherwise.

Environmental conditions: 23°C (73.4F), 50% RH.

Acoustic parameters		Min	Typ	Max	Unit	Comments
Sensitivity	@ 30 Hz	107.5	110	112.5	dB	
	@ 100 Hz	107	109.5	112	dB	
	@ 400 Hz	105	107.5	110	dB	
	@ 1000 Hz	106.5	109	111.5	dB	
Peak 1	frequency	1950	2150	2350	Hz	
	output	116	119	122	dB	
Valley 1	frequency	3250	3500	3750	Hz	
	output	109	112		dB	
Peak 2	frequency	4350	4600	4850	Hz	
	output	114	117	120	dB	
Valley 2	frequency	6500	6750	7000	Hz	
	output	97	100		dB	
Peak 3	frequency	7700	8000	8300	Hz	
	output	102	107	112	dB	
THD	@ 1/3 peak		2	5	%	
	@ 1/2 peak		0.8	5	%	
Maximum output @ peak frequency			138		dB	@ 50 mVA input

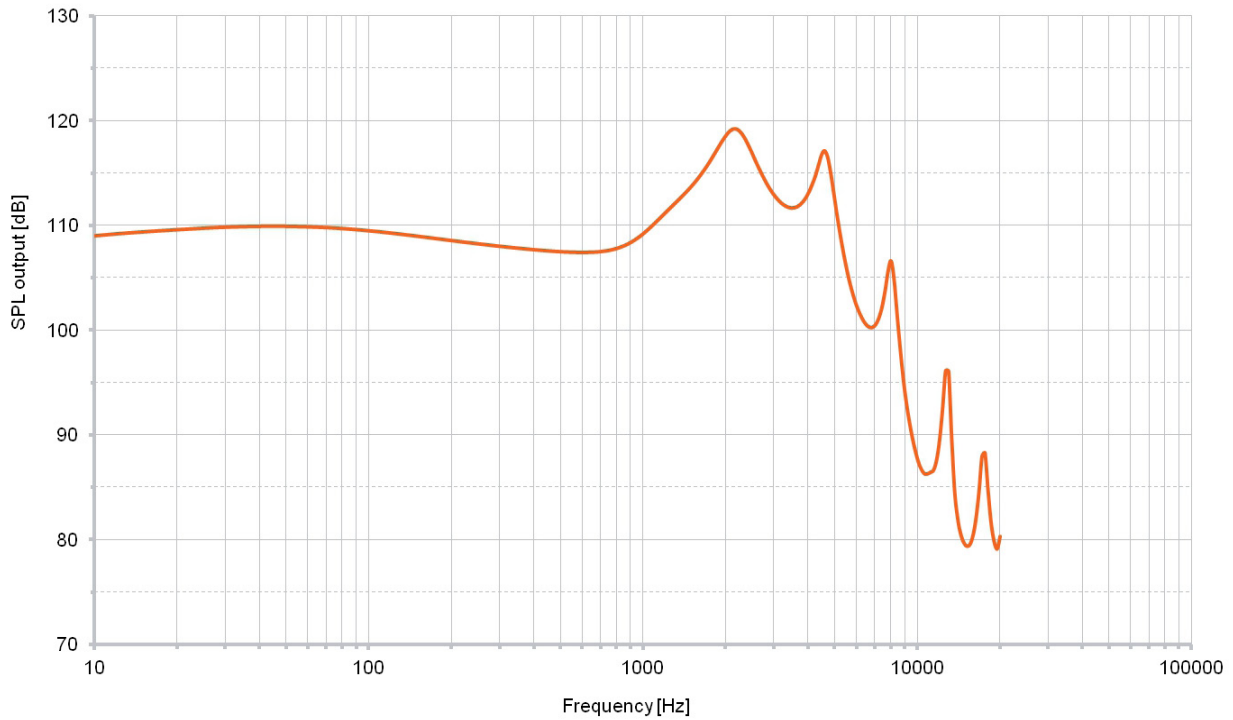
Electric parameters	Min	Typ	Max	Unit	Comments
Impedance @ 1000 Hz	40	50	60	Ohm	
Impedance @ 500 Hz	32	40	48	Ohm	
DC resistance @ 20°C	27	32	37	Ohm	

Additional parameters	Min	Typ	Max	Unit	Comments
Shock resistance	13000			g	90% survival rate with THD @ 1/2 peak frequency < 10%
Storage temperature range	-40		63	°C	

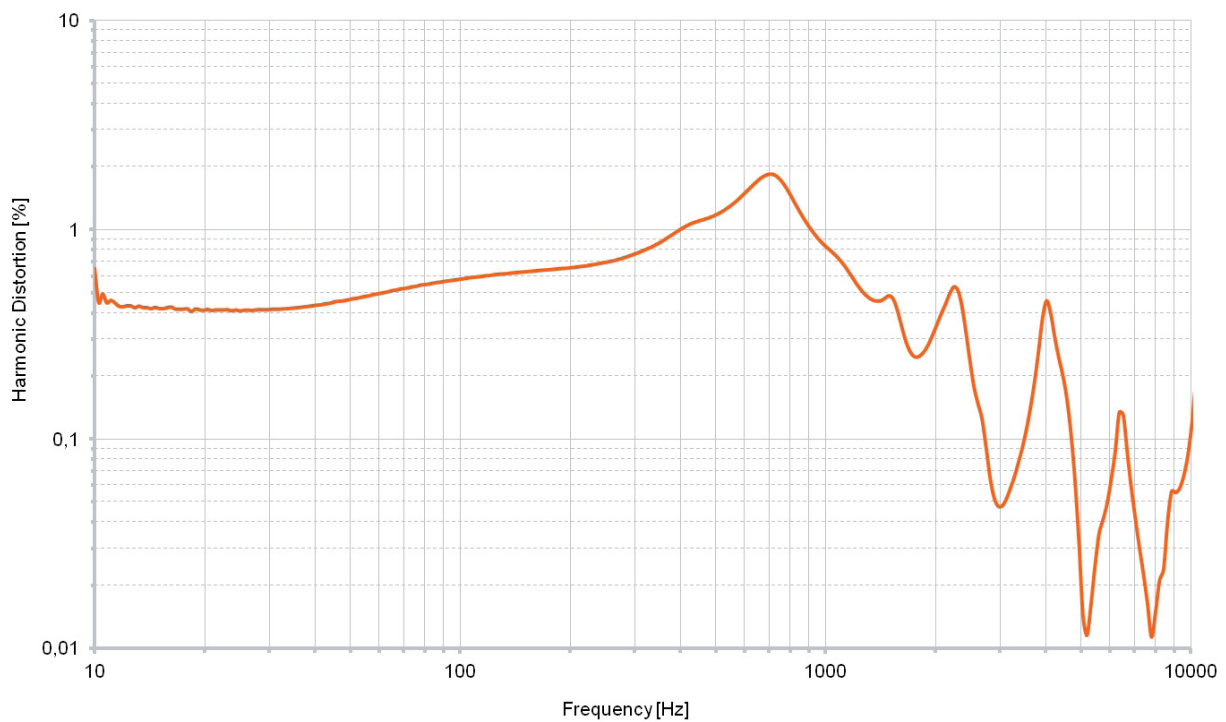
A positive voltage applied to the negative terminal (-) will result in an increase in pressure at the sound outlet.

Sonion reserves the right to make changes at any time to improve reliability, function or design, in order to provide the best product possible. Receivers series of this type can produce very high sound pressure levels. When such receivers are applied in hearing instruments or other communications equipment special attention should be paid to this capacity in order to prevent possible hearing damage.

Typical response curve



THD vs Frequency, typical, nominal input



Sonion reserves the right to make changes at any time to improve reliability, function or design, in order to provide the best product possible. Receivers series of this type can produce very high sound pressure levels. When such receivers are applied in hearing instruments or other communications equipment special attention should be paid to this capacity in order to prevent possible hearing damage.