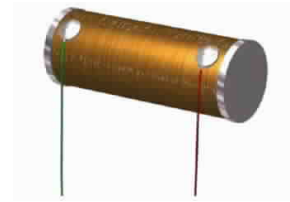


Description

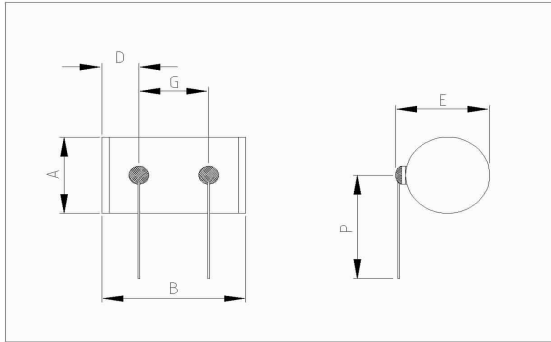
Inductive pick-up coil for use in hearing instruments.

Features

- Highly durable coating
- Small size
- High sensitivity



Dimensions



Mechanical data

Dimensions	in mm	in inch
Dimension A max.	2.11	0.083
Dimension B max.	3.61	0.142
Dimension D max.	1.25	0.049
Dimension E max.	2.45	0.096
Dimension G max.	1.75	0.069
Dimension P max.	19	0.748

Electrical data

Measuring conditions: Temperature = 23°C (73.4F)

Parameters	Min	Typ	Max	Unit	Comments
DC resistance	1950	2175	2400	Ohm	
Inductance @ 1 kHz	170	200	230	mH	
O. C. 1 kHz Sensitivity	-63.5	-62	-60.5	dBV/A/m	
10 kOhm load 1 kHz Sensitivity	-64.6	-63.1	-61.6	dBV/A/m	
Resonance frequency	120			kHz	
Winding sense	North positive				

Lead wires

Start lead description: Green, 18 mm, #36 AWG (Ø 0.127 mm), solid Cu with PU coating, 0.7 mm silverplated

Finish lead description: Red, 18 mm, #36 AWG (Ø 0.127 mm), solid Cu with PU coating, 0.7 mm silverplated

Lead wire length measured from centre solder pad.

Laquer red on solder pads.

Sonion reserves the right to make changes at any time to improve reliability, function or design, in order to provide the best product possible.