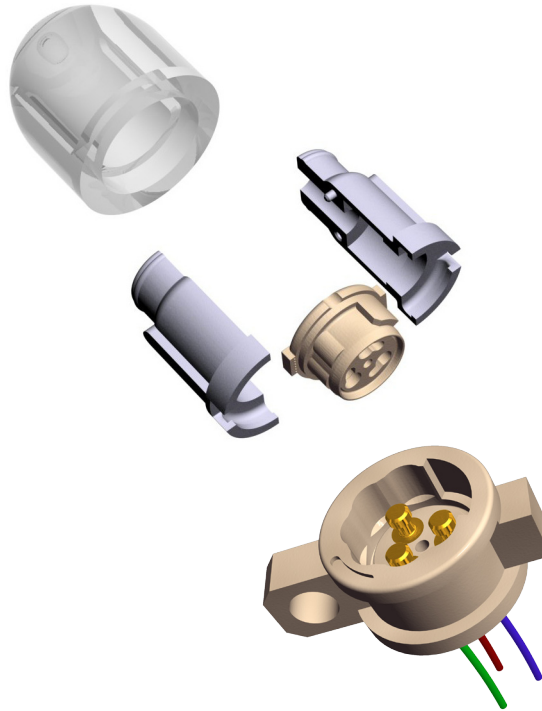


Features

- ⊕ For 'Receiver In the Canal' technology
- ⊕ Socket for BTE mounting
- ⊕ Plug mountable in customized plug cover
3 terminal connection
- ⊕ Bayonet-mounting: 45°
- ⊕ Good tactile feeling of mounting operation



Contents

	Page
History Revision	2
Mechanical Specifications	3
Electrical Specifications	4
Materials Specifications.....	4
Environmental Conditions	4
Recommended Processing Conditions.....	4
Mechanical Dimensions.....	5
Product Specification Form	7

Sonion reserves the right to make changes at any time to improve reliability, function or design, in order to provide the best product possible.

History Revision

Revision Number/Date	Change from last revision
01 / Oct 07	1 st revision
MT1008.A (07/08)	No technical updates
002/JUL-22-2009	No technical updates

Mechanical Specifications

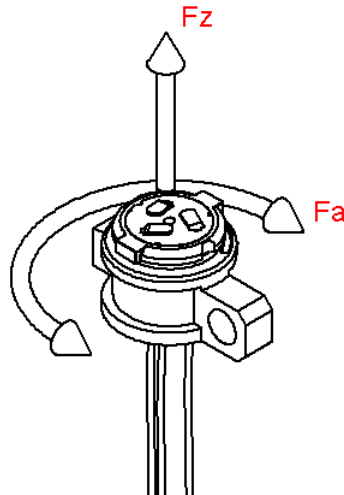
Rotational angle $45^\circ \pm 4^\circ$
End stop torque, F_a Min. 4.0 Ncm. Also depending on design of inner plug cover
Rotational torque for mounting/dismounting, F_a $1.5 \text{ Ncm} \pm 0.6 \text{ Ncm}$

Socket terminal retention force Min. 7 N per terminal

Disconnection retention force when locked, F_z Min. 10 N
Connection and disconnection of plug Min. 100 cycles
Connection and disconnection of socket Min. 100 cycles

Plug cover retention force Dependent on customer design

Illustration of definition of rotational force and retention force:



Electrical Specifications

Contact resistance between plug and socket Max. 500 mΩ
Insulation resistance between terminals Min. 10 kΩ

Materials Specifications

All materials comply with RoHS directive (2002/95/EC)



Tube Lock PA 6.6 glass reinforced
Plug LCP and PEEK
Plug contact springs AgPd
Socket LCP
Socket terminals Stainless steel, gold plated
Socket wires Insulated, solid flexible wire

Lubricant, glue/seal and paint are proprietary information

Environmental Conditions

Storage temperature -40 to +60°C
Storage humidity 10 to 95% RH

Recommended Processing Conditions

Mounting of socket:
Mounting screw ø 1.0 mm

Soldering:

Soldering temperature and time Max. 300°C [572°F] for 3 s or 350°C [662°F] for 1 s
Soldering distance: Min. 0.2 mm [0.012"] from housing

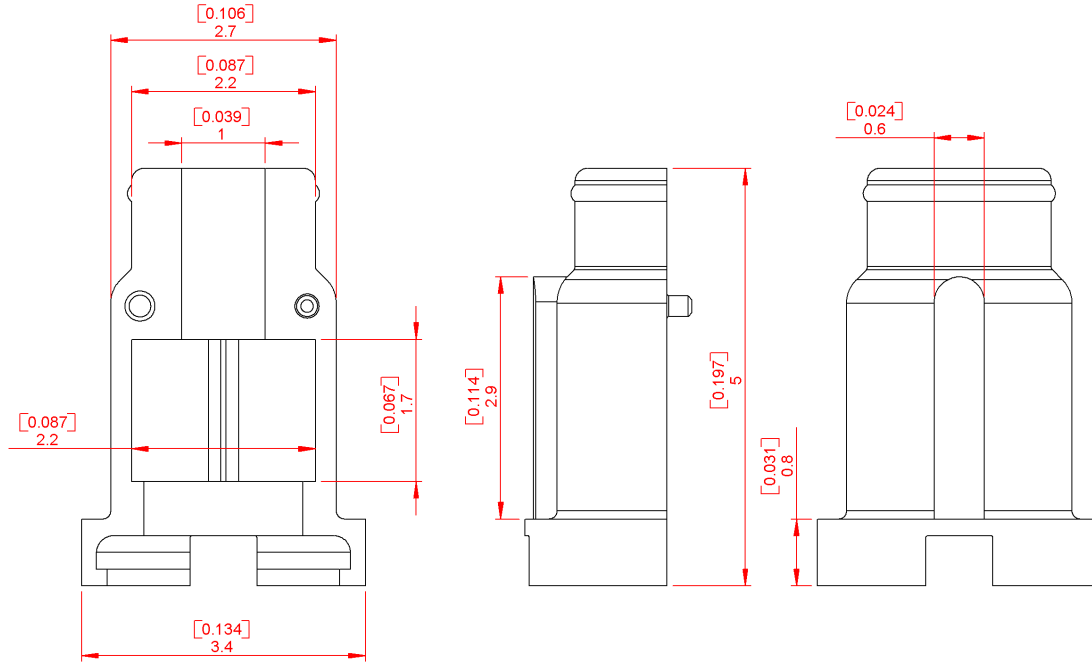
Exceeding temperature, time and distance recommendations may damage the component.

Mechanical stress on soldering terminals must be avoided during soldering.

Cleaning:

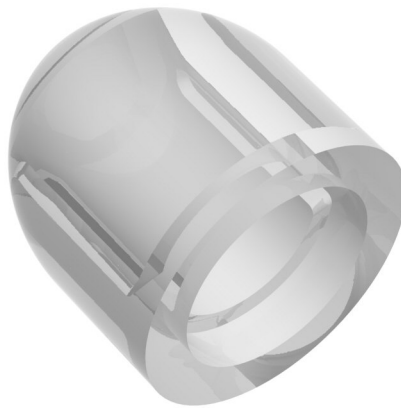
Cleaning solvents Aqua wash (Alpha 2110), Benzine
Ultrasonic cleaning must be avoided as it may remove the lubricant inside the component

Tube Lock



The tube lock are 2 parts, which hold the plug and RIC tube in place. They are kept together by a plug cover, which Sonion can customize to match specific BTE geometry

Example of possible Plug Cover



Product Specification Form

Name: _____

Company: _____

Customer Part No.: _____

Parameters	Look at Page	Enter your choices	Guidelines
Model	1	RIC	
Terminal Length & Color	7		Socket terminal length: 15 mm Socket terminal colors: Red, yellow and blue
Plastic Colors			Socket: 1200 (uncolored) Tube Lock: 122 (grey) Plug Base: 1200 (uncolored) Plug Front Part: 700 (uncolored), 755 (blue), 770 (red)