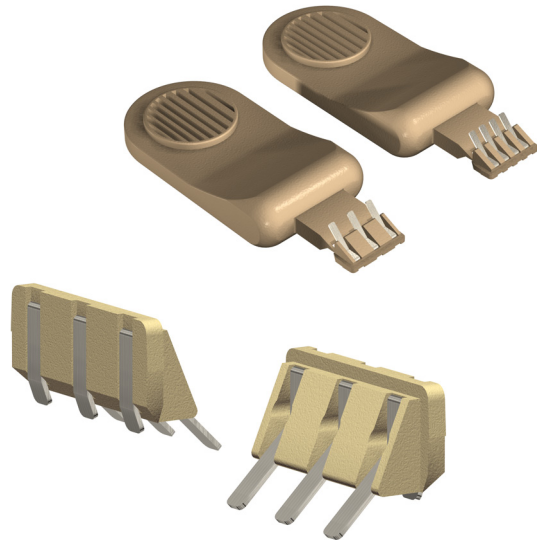


Features

- ③ 2 versions: CS 73 for 3 contacts, CS 74 for 4 contacts
- ③ Interfaces with CS 63/64 Flexible Interconnect System and CS 53/54 Flex Adaptor
- ③ Replaceable snap-in module
- ③ Miniature size - fits in any ITE/ITC/CIC application
- ③ Heat resistant plastic and non-corrosive contacts



Contents

	Page
History Revision	2
Mechanical Specifications	3
Electrical Specifications	3
Material Specifications	3
Environmental Conditions	3
Recommended Process Parameters	3
Mechanical Dimensions	4
Product Specification Form	7

Sonion reserves the right to make changes at any time to improve reliability, function or design, in order to provide the best product possible.

History Revision

Revision Number/Date	Change from last revision
07 / May 08	History Revision added. Product Specification Form added. Operational temperature and humidity removed. New data sheet design. New lay-out.
MT1004.A (07/08)	No technical updates
008/JUL-22-2009	No technical updates
009/JUL-13-2011	Storage humidity added.

Mechanical Specifications

Lifetime:
-Flex Strip insertion..... Min. 50 cycles

Electrical Specifications

Clip Module

Continuous current..... Max. 150 mA
Insulation resistance between terminals..... Min. 1 M Ω
Contact resistance..... Max. 150 m Ω
Contact resistance when pulling with 1N in all directions..... Max. 150 m Ω (max. allowed change 5 m Ω)

Material Specifications

All materials comply with RoHS directive (2002/95/EC)



Metal parts..... Pd/Ag alloy
Plastic part..... PEEK

Environmental Conditions

Storage temperature..... -40 to +60°C
Storage humidity..... 10 to 95% RH

Recommended Process Parameters

Gluing:

Types of glue..... Cyanoacrylates (non-blooming) , i.e. Loctite 401, 408, 460 and Sicomet 50, 63, 77
Non-blooming types must be used to ensure that residuals from the curing process do not degrade the component.

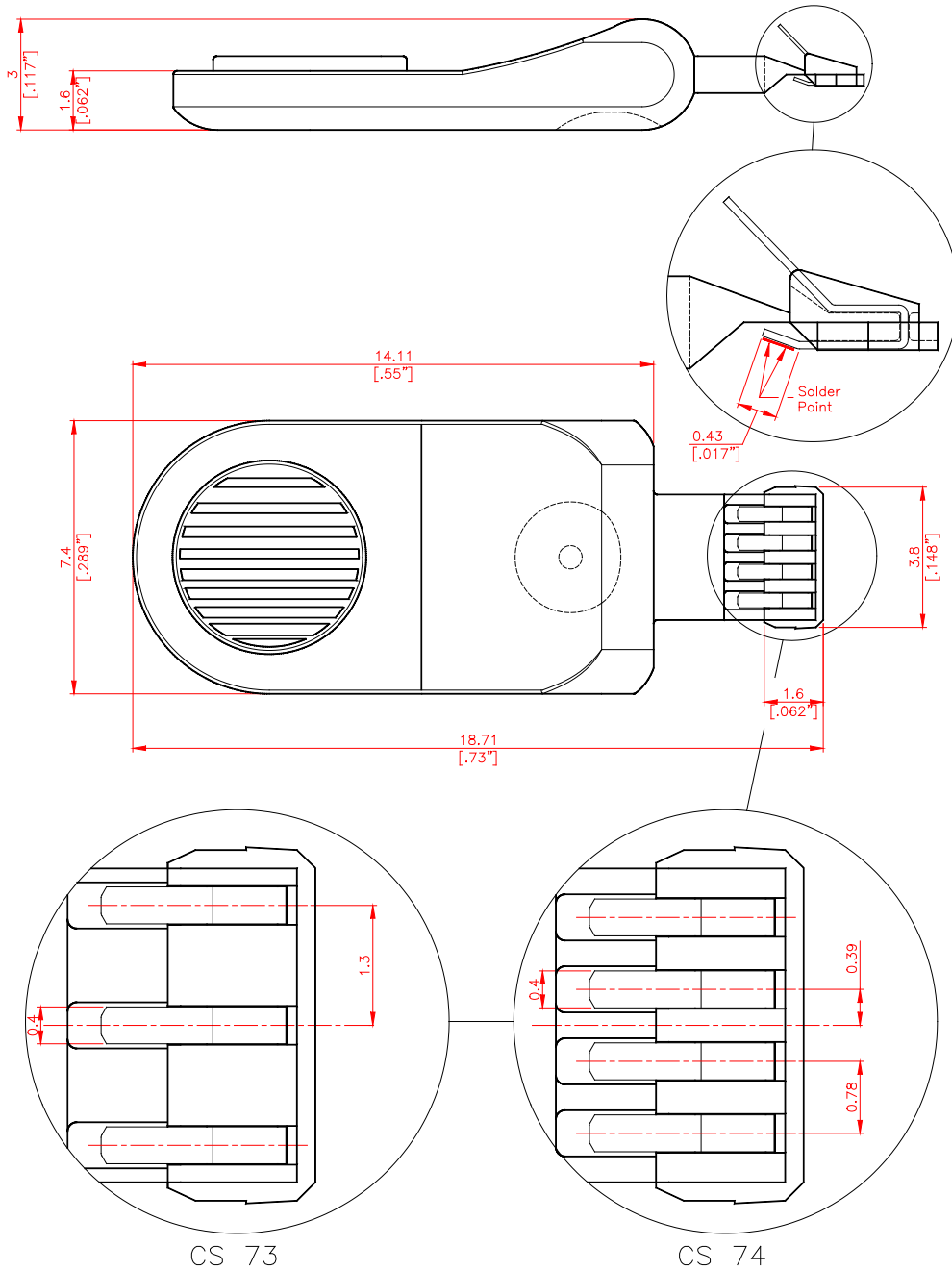
Soldering:

Soldering temperature and time..... 300°C [570°F] for 3 s or 350°C [660°F] for 1 s
Solder point..... See description in 'Mechanical Dimensions'

Cleaning:

Cleaning solvents..... Aqua wash (Alpha 2110), Benzine

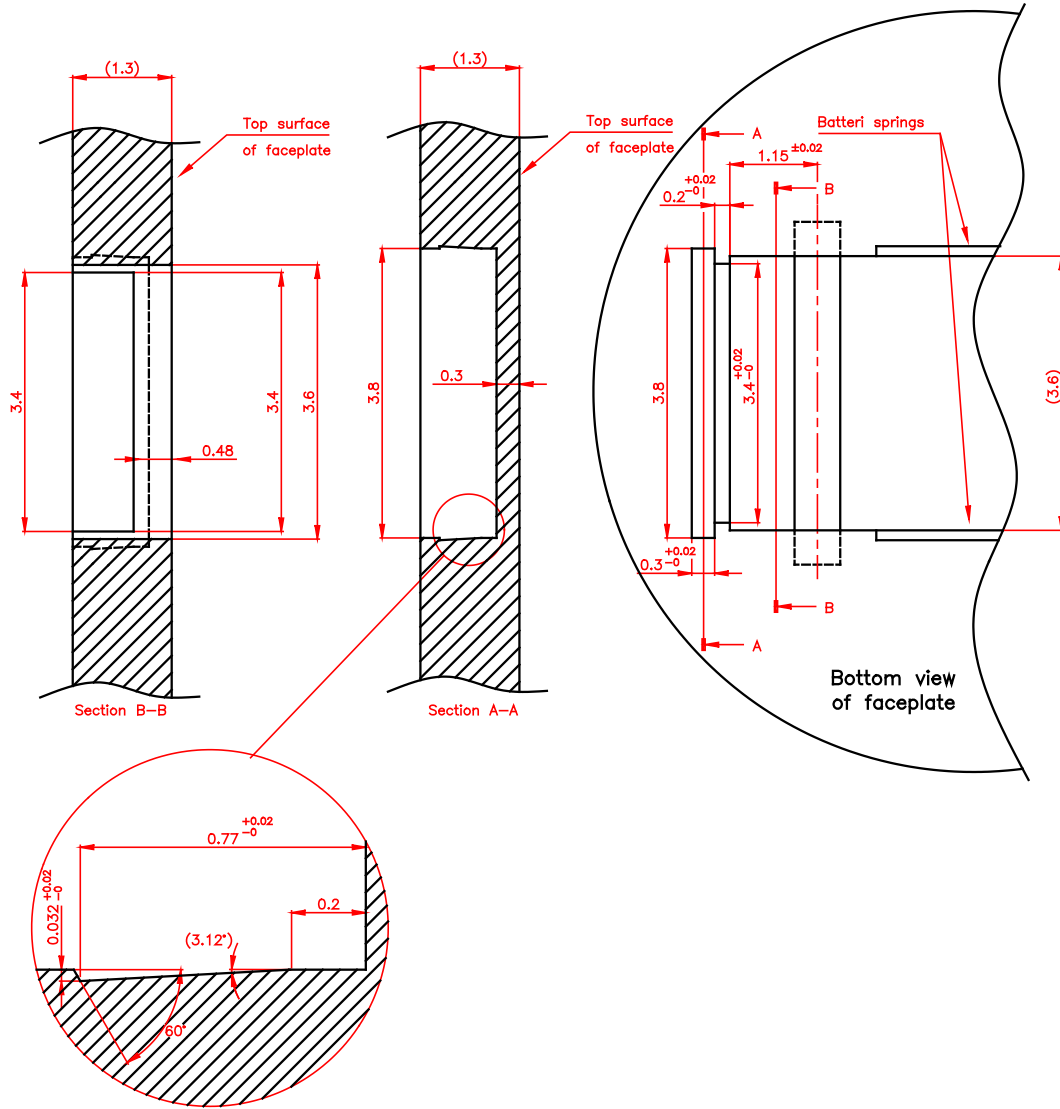
Mechanical Dimensions



Note:

The standard measurement tolerance on the drawings is ± 0.05 mm/[0.002"]. Tolerances which differ from this value will be indicated on the drawings.

Cavity in faceplate for Insert Socket Module. Faceplate thickness 1.3 mm



Note:

Unless otherwise noted, tolerances are +0 mm/-0.02 mm [+0/-0.008"].

Product Specification Form

Name: _____

Company: _____

Customer Part No.: _____

Parameters	Look at Page	Enter your choices	Guidelines
Model	1		Please enter CS 73 or CS 74